

# Graves Into Gardens

(based on the recording by Elevation Worship | original key: B)

Words and Music by  
Brandon Lake, Chris Brown,  
Steven Furtick and Tiffany Hammer

♩=46 Swing-sixteenths

## VERSE 1

A

E

A

E



1. I searched the world, \_\_\_ but it could-n't fill \_\_\_ me. \_

4

C#m<sup>7</sup>

B<sup>(4)</sup>

A<sup>2</sup>



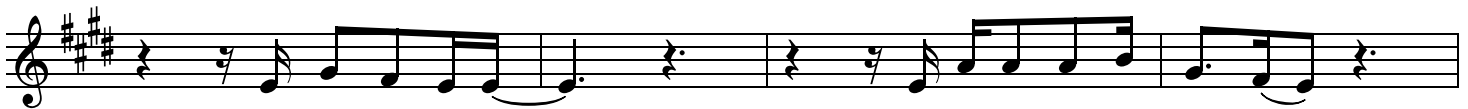
Man's emp - ty praise \_\_\_ and trea - sures that fade \_\_\_ are nev - er e - nough. \_

8

E

A

E



Then You came a - long \_\_\_ and put me back to - geth - er. \_

12

C#m<sup>7</sup>

B<sup>(4)</sup>

A<sup>2</sup>



And ev - 'ry de - sire \_\_\_ is now sat - is - fied \_\_\_ here in Your love. \_

## CHORUS

E

C#m<sup>7</sup>

16



Oh, there's noth - ing \_\_\_ bet - ter than You. \_ There's noth - ing \_

## TURNAROUND

20 A<sup>2</sup> E

bet-ter than You. \_ Lord, there's noth - ing, \_ noth-ing is bet-ter than You. \_

## VERSE 2

24 A E A E A

2. I'm not a - fraid \_ to show You my

29 E C#m<sup>7</sup>

weak - ness. \_\_\_\_\_ My fail - ures and flaws, \_ Lord You've seen them all, \_

32 B<sup>(4)</sup> A<sup>2</sup> E

\_ and You still \_ call me friend. \_ 'Cause the God \_ of the moun - tain \_

36 F#m<sup>7</sup> E C#m<sup>7</sup>

is the God of the val - ley. \_ There's not a place \_ Your mer - cy and grace .

## § CHORUS

40 B<sup>(4)</sup> A<sup>2</sup> E

\_ won't find me a - gain. \_\_\_\_\_ Oh, there's noth - ing \_

44 C#m<sup>7</sup> A<sup>2</sup>

bet-ter than You. \_ There's noth - ing \_ bet-ter than You. \_ Lord, there's noth - ing, \_

48

1, 3. E 2, 4.

noth-ing is bet-ter than You. — Oh, there's noth-ing is bet-ter than You. —

52

TURNAROUND BRIDGE

E A E A E

(2nd x jump to Br.)

— (1, 2) You turn mourn-ing to danc-  
(3-5) You turn graves in - to gar -

57

A E A E

- ing. — You give beau-ty for ash - es. — You turn shame in - to glo -  
- dens. — You turn bones in - to ar - mies. — You turn seas in - to high-

61

C#m7 A2

1, 2, 4. 3, 5.  
E E

- ry. — You're the on - ly one who can. — — You're the  
- ways. — You're the on - ly one who can. —

65

TAG

C#m7 A2

1. D.S. 2.  
E A E A E

on - ly one who can. — Oh, there's —